

Annual Meeting

May 13 at 6:30

Pittsfield Elementary School
Multi-Purpose Room

Come discuss important
topics that affect us all
here at Pittsfield Village!



We Want You!

Kat Irvin
Treasurer

Are there things going on in Pittsfield Village that you really like? Are there things you are unhappy about? Do you have ideas for how this could be a better place to live? Do you think it's good to have new people join the Board every few years so that the community's direction is influenced by new ideas and perspectives? Or, have you never thought about any of this before? If not, perhaps now is the time. There are three Board seats up for election at our Annual Meeting on May 13th, and we need YOU to consider running. The Board is a key part of our community's leadership, and it's a great way to get involved. Anyone in our



community can run, as long as they own and reside in a condominium unit.

This is my second year on the board. I have learned a lot about many different things, worked with some great people and I've been able to influence the direction of our community for the past years.

I've agreed to be the current Board member contact for anyone interested in running. If you might be interested, or if you just have questions about what it means to be a Board member, send me an email (kat.irvin@pittsfieldvillage.com) or give me a call at (734) 477-0380. I hope you will consider running—our volunteer leadership is only as strong as those willing to get involved!

Calling All Crafters!

Do you like to rubber stamp cards, make jewelry, paint, sew hats, create bath products or have some other craft? Join the annual Pittsfield Village craft show held during The Flower Giveaway on Saturday, May 17 from 11am until 1pm. This fun event is open to all Pittsfield Village residents. If you have never sold your crafts before this is a fun, relaxed place to show your creations to the public. There is no cost for you to set up a display. Bring a table, perhaps a chair, your crafts, money to make change and perhaps some cards so you can be contacted again. Call the office or email office@pittsfieldvillage.com to let us know you want to join in the fun. We will love seeing what you have!

It's almost here!

The Flower Giveaway!

Saturday, May 17, 11am -1pm



Board of Directors

Aaron Pressel

President

(734) 678-4074

aaron.pressel@pittsfieldvillage.com

Jessica Lehr

Vice President

(734) 891-6073

jessica.lehr@pittsfieldvillage.com

Kat Irvin

Treasurer

(734) 477-0380

kat.irvin@pittsfieldvillage.com

Sarah Deflon

Secretary

(734) 358-1946

sarah.deflon@pittsfieldvillage.com

Frank Lotfian

Member at Large

Frank.Lotfian@pittsfieldvillage.com

Committee Chairs

Kelsey Carter

Communications Committee

Margarita Garcia-Roberts

Finance Committee

Barbara Scoville

Landscape Committee

Ellen Johnson

Modification &

Maintenance Committee

Management Office

Terri Leirstein

Community Manager

Tracy Vincent

Administrative Manager

Wanda Buster

Bookkeeper

Monday—Friday

8:30am - 5:00pm

2220 Pittsfield Blvd.

Ann Arbor, MI 48104

Phone (734) 971-0233

Fax (734) 971-3421

office@pittsfieldvillage.com

www.pittsfieldvillage.com

Facebook.com/PittsfieldVillage

Design and Nature Photography

Karen Tuttle of klizaDESIGN.com

Now and Then: Playing in the Village

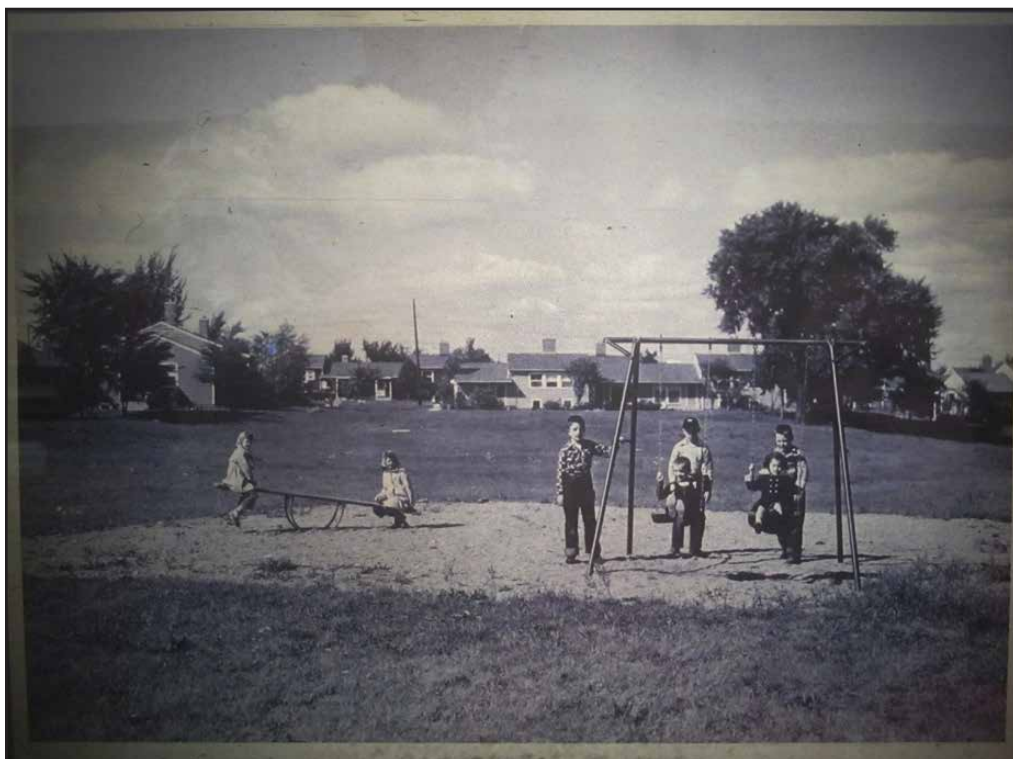
We survived the polar vortex. Spring brings out the kids! Pittsfield Village refreshed the play structures to welcome the “sprouts” heading for the backyards. We have 6 play structures. In the fall they were inspected by A to Z Adventure Group and were found to be structurally sound. Some of the components, such as the ropes, needed to be replaced. We had A to Z Adventure Group wash and stain the structures as well as replace components that had come to the end of their functional lives.

In keeping with fiscal responsibility of Pittsfield Village funds, a survey regarding playground usage was taken last year. Most of the respondents felt that the play structures did enhance their enjoyment of living in Pittsfield Village. There were some respondents that felt that the structures were not of value. Rejuvenating the play structures was a modest investment in our property that struck a balance between those who enjoy the structures and those who have no use for them.



A boy from Pittsfield Boulevard checks out the refreshed play structure on the south end of Pittsfield Village.

Photo: Jason Beckerleg



Kids in 1953 enjoying the backyard between Norwood and Packard.

The Flower Giveaway!

May 17, 11am to 1pm

Event is held in the corral behind the Pittsfield Village Office. If you CANNOT attend, please give your neighbor a note authorizing them to pick your flowers up for you. If you cannot send a neighbor, call the Pittsfield Village office (971-0233) the following Monday, May 19, 2014, to inquire on the availability of remaining flowers.

HOT DOGS AND REFRESHMENTS WILL BE SERVED BY THE PITTSFIELD VILLAGE CONDO BOARD DURING THIS POPULAR ANNUAL EVENT.

NOTE on TOPSOIL

Please allow one week, weather permitting, for the delivery of requested topsoil/mulch. Superior will make every attempt to have all requests delivered by the Wednesday following the Flower Giveaway date. If you requested topsoil/mulch and do not receive it within five days, please call the Pittsfield Village Office and we will follow up.



"Youngsters" playing in the Village in 1962

The above photo was used in a 1962 ad campaign for Pittsfield Village apartments. According to the advertisement, the "youngsters" are visiting Pittsfield Village as part of a "special school outing". Based on how much wear there is in the grass it looks like they may have made special trips often. To see more literature from the Pittsfield Village apartment days, check out the Ann Arbor District Library online picture gallery: <http://www.aadl.org/gallery/pictureAnnArbor/pittsfieldv/pittsfieldv01.jpg.html>

Where in the Village do you think this equipment was set up? Send an email to office@pittsfieldvillage.com.



Pittsfield Village
Communications
Committee

Bulletin

CONDO OWNERS: STILL WRITING CHECKS?

If you are still writing checks each and every month, worrying about getting the payment in on time, using ever-increasing postage stamps, well, we have a solution for you! Perhaps you are interested in safe, easy, convenient and reliable method for paying your monthly Association Fees. If so, we urge you to consider signing up for Direct Debit from your checking or savings account! All you have to do is complete the short form and return it with a voided check to Wanda Buster at the Pittsfield Village office. The monthly fee will be automatically withdrawn at the beginning of the month and you'll NEVER have a late fee!

ESTATE SALE

3507 Oakwood

Saturday, May 17, 10:00 am to 3:00 pm
Furniture, antiques, clothing, household goods, and more.

PITTSFIELD VILLAGE GARDEN NETWORK

Gardeners all - veggie gardeners, flower gardeners, new gardeners, been-gardening-for-a-long-time gardeners: contact me and we will set up an online group to support each other, to give away extra plants, produce, etc., as well as a place to get advice from your neighbors. Contact Su Hansen suhan722@gmail.com (734)417-8397 to join the list.

By the way, last I heard there were still some plots available through Project Grow: www.projectgrowgardens.org on Platt Rd where the old Juvenile Detention Center was. Happy Gardening!



In the Garden

Lisa Joseph, Master Gardener
Pittsfield Village Staff Horticulturist

I started my spring clean up on the first few nice days in early April. The Crocus and Chionodoxa (Glory of the Snow) were blooming and some of my perennials were just starting to show their new growth. I enjoy this time in the garden so much. Yes, it's hard work. But the promise of things to come is utterly exhilarating.

I love to remove garden debris and find overwintering native lady beetles (ladybugs) underneath. They are such a treasure! The Asian variety, on the other hand, is quite a pesky nuisance. They have to find a safe haven in south-facing cracks to make it through the cold months. Now that the sun is warming my living room, I have at least 30 of those buggers indoors every single day all over the windows. I'm constantly vacuuming them up with my shop vac. They emit quite a stink when disturbed too. Have you noticed this? They expel a yellow foul-smelling liquid when agitated. The yellow gunk stains my windowsills. Their larvae do, however, feed on aphids and scale insects so they are beneficial in this capacity. I empty my shop vac outside so that they can fly off and mate. At least I'll have predators for any aphid infestations this summer!

I had an idea. I'm going to discuss a featured perennial each month. The gem for this month is Catmint.

Featured Perennial for May: **Nepeta 'Walker's Low' (Catmint):**

This variety of Catmint reaches a mature size of 18" tall by 24" wide. The gray green foliage is pleasantly aromatic, and the purple flower spikes cover the plant from May until October. I shear off the spent flower heads in mid summer just so it looks more attractive. This perennial attracts butterflies, bees, and beneficial insects. It is drought tolerant, likes good drainage, and it prefers a sunny location to look its best. I noticed recently that one of the local garden centers will be carrying a new variety called 'Cat's Meow'. I think I'm going to have to test that one too! At 18 x 18", it is just a bit smaller. If you have limited space in your garden, this variety may be a better fit.

I'm unhappy with this cold and windy spring. I long for the warmth! Where is the warmth? Lately, I'm still wearing my winter coat and sulking. I feel like I'm in slow motion.

I did see that the Forsythia are in bloom, and the Saucer Magnolias are just starting. I'm hoping for a major turn around come the beginning of May!

Let the summer begin!



Nepeta 'Walker's Low' (Catmint)

Moving Time

Spring is a time when many people move. It is also a time when the critters and creepy crawlies move too.

If all of a sudden your dryer seems to be taking a long time to dry your clothes, go outside and check to see if a bird is nesting in your dryer vent. You may have to reach in pretty far to pull out all the nesting material. Your dryer should be just fine after that.

This is also the start of ant season and other pests. Pittsfield Village has a contract for weekly visits from Eradico to help you with these types of invasions. Call the office at (734) 971-0233 for an appointment.

Robin's nest in dryer vent, oh no!



Good News and Bad News: Reflecting on the Past Winter

The good news of the winter is that it seems to be over. It was also good news that, even though Mother Nature mixed up Tax Day, April Fool's Day and dumped 4 inches of snow over Ann Arbor, we did not have to call Margolis to plow or salt because the snow melted as soon as it hit the ground.

We started the winter off in a bad spot as far as the budget was concerned. We had budgeted \$69,750 for snow removal for the 2013-2014 winter. The bids for a seasonal push came in at \$76,670. In light of that, the Board decided to try and keep the budget down and go for a per-push contract with Margolis.

It is fair to say that unless you were a PHD in climatology you had not heard the phrase "Polar Vortex" before.

We ended up having 20 snow pushes this year. According to the National Ocean and Atmospheric Administration we had a record seasonal snow fall coming in at 90.3 inches of snow.

The final cost for dealing with the snow this season is \$126,050.

High Five, we made it!

Despite the burden of this snow, Margolis did an admirable job in responding. Margolis had the equipment on our property and the staff in the wings. In years past, we have not always had satisfactory service, even with far less snow.

High five to our Maintenance Staff and our Management team for the extra efforts they went to. They worked hard to keep ahead of problems.

The \$56,300 overage was paid for from "rainy" (or snowy) day savings built into the overall Pittsfield Village budget. High Five for all the people who volunteered to make sure that we were fiscally prepared for the exceptional and unexpected.

High Five! We survived the Polar Vortex!

Update on Pesticide and Fertilizer Use in the Village

The Pittsfield Village Board of Directors, with the endorsement of the Landscape Committee, has elected to not to use lawn pesticides and fertilizers in 2014. The decision was reached after lengthy discussions regarding the positive and negative effects of pesticides. Considerations included health effects, environment impact, aesthetic purpose, real estate values and cost.

Support for the no pesticide initiative began last fall when a door to door petition revealed that over 100 villagers supported restrictions on lawn pesticide use. The Board of Directors asked the Landscape Committee to assess the feasibility of pesticide restrictions and the Committee advised the Board to remove pesticides and fertilizers from the 2014 budget.

Kramer-Triad, our property management company and Michigan's largest community association firm, recently surveyed the 31 property managers represented by their company and found that Pittsfield Village is by far the largest community that has

ever made the decision to try eliminating lawn pesticides. This statement has been confirmed by various local realtors, including Jason Boggs (Jason@jasonboggshomes.com), President of the Ann Arbor Area Board of Realtors. He endorses the Pittsfield Village effort and believes, "the pesticide ban will appeal to buyers in our local community, who will search out and cheer on efforts such as yours."

The Landscape Committee paid particular attention to published scientific research concluding that direct and airborne exposures to lawn pesticides adversely impacted the health of humans, particularly children, and animals. For example, as recently as February 2013, the American Academy of Pediatrics found, "Epidemiologic evidence demonstrates associations between early life exposure to pesticides and pediatric cancers, decreased cognitive function, and behavioral problems." Further, in January 2012, the Journal of Environmental Research concluded that exposure to professionally applied lawn pesticides contributed to an

Cobblestone Farm Market

Starting May 20, join Cobblestone Farm Market every Tuesday from 4-7pm for sustainably-grown organic local produce (often picked that morning), prepared foods, live music, children's crafts and activities, and more! Located on the grounds of historic Cobblestone Farm in Buhr Park, this family-friendly market offers something truly unique to each and every visitor. We're just a stone's throw away from Pittsfield Village, so stop by, say hi, and see what our market has to offer you. All are welcome, so make sure to tell a friend.

Learn more at www.cobblestonefarmmarket.org



approximately 70 percent higher risk of malignant lymphoma in dogs.

Also, as villagers are aware, the Pittsfield Village properties sit on top of the Swift Run watershed that flows to the Huron River. The Board of Directors and Landscape Committee take pride knowing that our community will have less of an ecological footprint this coming year.

You will, however, continue to see some of the warning flags alerting you that weed killers have been sprayed in your vicinity. Please note that although the decision has been made to eliminate the wide spread lawn pesticides and fertilizer applications, the lawn maintenance company will continue to spray weed killer in your individual garden beds unless you tell them otherwise by contacting the condo office and requesting orange garden markers that alert the landscapers that you will take care of the garden beds yourself.

May 2014

*All meetings to be held in Pittsfield Village
Community Room unless otherwise noted.*

				1	2	3
4	5 6pm M&M Committee meeting	6	7	8	9	10
11	12	13 6:30pm Annual Meeting <i>Pittsfield Elementary School</i>	14	15 6pm Finance Committee meeting	16	17 Annual Flower Giveaway 11am-1pm
18	19	20 6pm Landscape Committee meeting	21	22	23 Newsletter articles due	24
25	26 Memorial Day Office closed POOL OPEN FOR THE 2014 SEASON	27 6:30pm Communication Committee meeting	28	29	30	31



Spring is beautiful in Pittsfield Village!

Annual Meeting



**May 13 at 6:30
Pittsfield Elementary**



“Like” us on Facebook!

Facebook.com/PittsfieldVillage